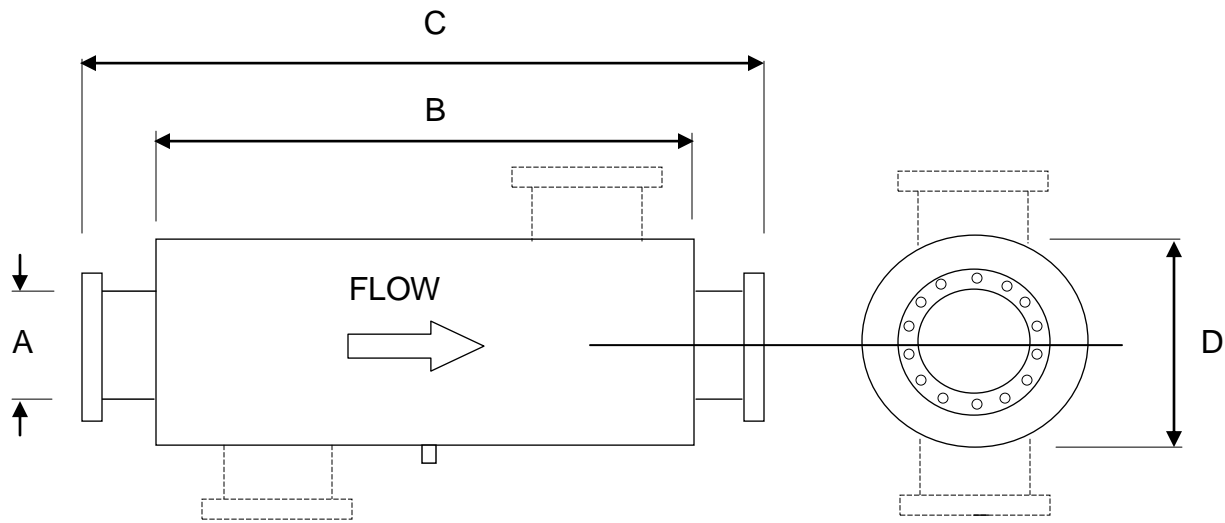




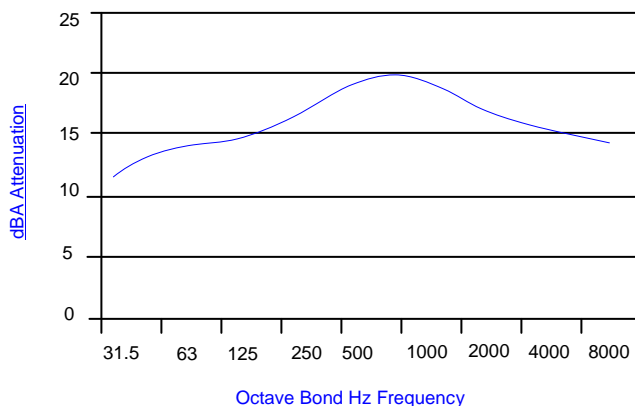
CE20SA Spark Arresting Silencers



CE20SA (END INLET-END OUTLET) CE20SAS (SIDE INLET-END OUTLET)

ØA	B	C	ØD
75	510	660	220
100	660	810	270
125	810	960	320
150	910	1060	380
200	1220	1370	520
250	1295	1445	630
300	1520	1670	750
350	1700	1900	850
400	1830	2030	930

* Larger sizes available on request



APPLICATION

Spark Arresting series is a low performance reactive silencer recommended for those conditions where the ambient noise levels in the environment is moderate. Used particularly where stringent noise criterion is demanded. Offers excellent broadband attenuation. For use with two and four cycle engines.

PERFORMANCE

An attenuation of up to 20dbA is attained from the outlet of CE20SA / CE20SAS range of silencers under open-field conditions.

FEATURES

- Mild steel body with JIS 5K flanges
- Coated with heat-resistant aluminum paint (Up to 600°C)
- Can be mounted either vertically or horizontally without affecting performance
- Modifications and other sizes available upon request

CORD EXHAUST ENGINEERING PTE LTD

69 TECH PARK CRESCENT, SINGAPORE 638073.

TEL NO : 67442689 FAX NO : 67472217 E-MAIL : enquires@cordexhaust.com.sg WEBSITE : www.cordexhaust.com.sg