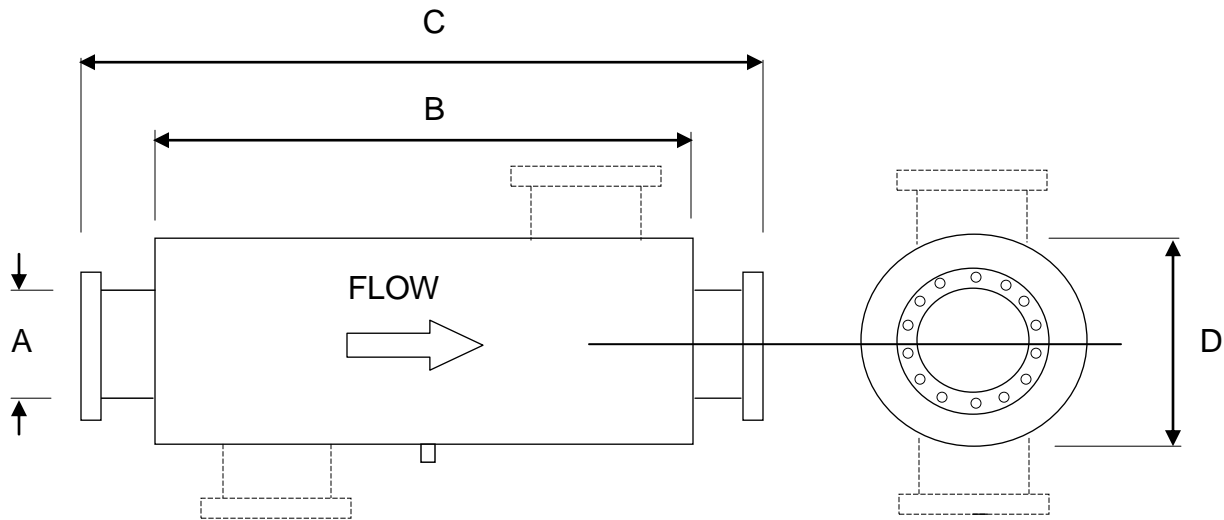




SG02/00262

SG02/55341

# Industrial Silencers



## SIE

(END INLET-END OUTLET)

## SIS

(SIDE INLET or SIDE OUTLET)

ØA	B	C	ØD
75	510	680	300
100	660	835	350
125	810	985	400
150	910	1090	450
200	1200	1410	560
250	1295	1510	660
300	1520	1735	760
350	1700	1960	910
400	1830	2010	1020

## APPLICATION

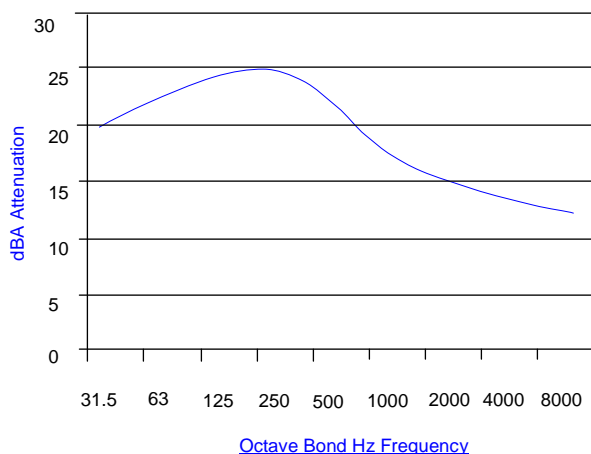
Industrial series is a medium performance reactive silencer recommended for those conditions where the ambient noise levels in the environment is low. Used particularly where stringent noise criterion is demanded. Offers excellent broadband attenuation. For use with two and four cycle engines.

## PERFORMANCE

An attenuation of up to 25dbA is attained from the outlet of SIE / SIS range of silencers under open-field conditions.

## FEATURES

- Mild steel body with JIS 5K flanges
- Coated with heat-resistant aluminum paint (Up to 600°C)
- Can be mounted either vertically or horizontally without affecting performance
- Modifications and other sizes available upon request



## EXHAUST CONTROL INDUSTRIES (S) PTE LTD

69 TECH PARK CRESCENT, SINGAPORE 638073.

TEL NO : 67442689 FAX NO : 67472217 E-MAIL : enquires@eci.com.sg WEBSITE : [www.eci.com.sg](http://www.eci.com.sg)

\* ECI is protected by local and international trademark legislations. Patent Pending.