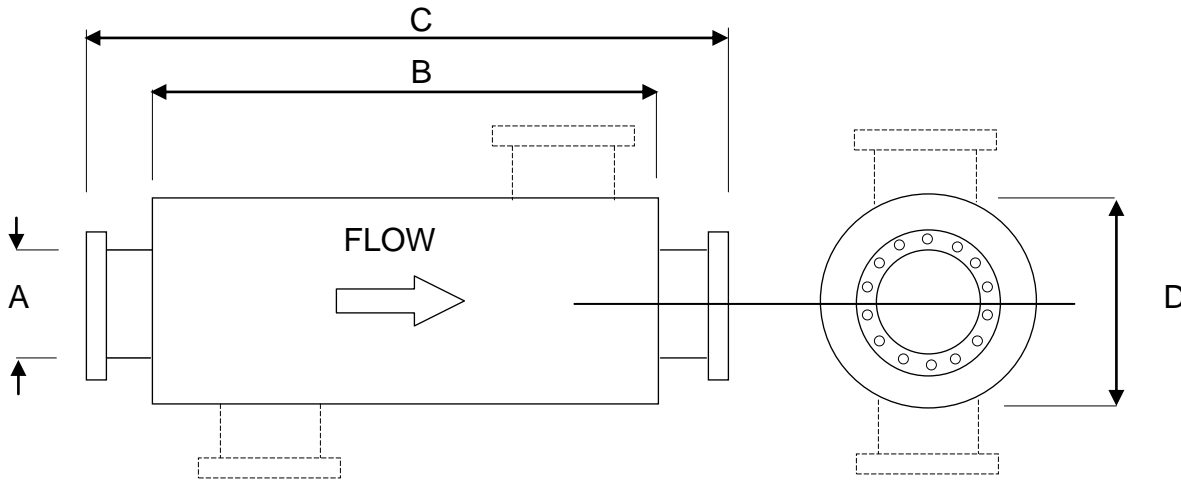




SG02/00262

Absorptive Silencers[®]



SAE

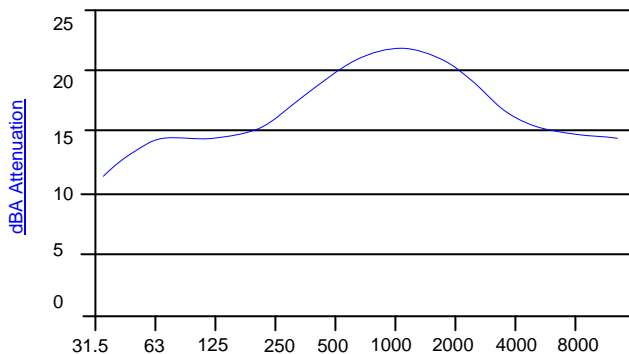
(END INLET-END OUTLET)

SAS

(SIDE INLET OR SIDE OUTLET)

ØA	B	C	ØD
75	910	1060	230
100	1220	1420	250
125	1440	1570	300
150	1520	1730	380
200	1620	1840	450
250	1830	2030	550
300	2130	2340	650
350	2510	2720	750
400	2800	3000	850

* Larger sizes available on request



Octave Band Hz Frequency

APPLICATION

Absorptive series is a medium performance absorptive silencer recommended for those conditions where the ambient noise levels in the environment is low. Used particularly where stringent noise criterion is demanded. Offers excellent broadband attenuation. For use with two and four cycle engines.

PERFORMANCE

An attenuation of up to 25dBA is attained from the outlet of SAE / SAS range of silencers under open-field conditions.

FEATURES

- Mild steel body with JIS 5K flanges
- Coated with heat-resistant aluminum paint (Up to 600°C)
- Can be mounted either vertically or horizontally without affecting performance
- Modifications and other sizes available upon request

EXHAUST CONTROL INDUSTRIES (S) PTE LTD

69 TECH PARK CRESCENT, SINGAPORE 638073.

TEL NO : 67442689 FAX NO : 67472217 E-MAIL : enquires@eci.com.sg WEBSITE : www.eci.com.sg

* ECI is protected by local and international trademark legislations. Patent Pending.